



SCHENECTADY, NY AREA INFORMATION

Derived from a Mohawk word meaning “beyond the pines,” [Schenectady, NY](#) has been a manufacturing and transportation corridor since the 19th century. It is known as “The City that Lights and Hauls the World,” a reference to the fact that it originally housed the companies General Electric and the American Locomotive Company.



Schenectady contains various historical and recreational sites, and its close proximity to Saratoga Springs, Lake George and Albany, New York’s capital city, provides something for everyone.

Transportation

By Car

It is easy to drive and park around Schenectady. Whether you drive yourself or let someone else take the wheel via [Uber](#) or [Capitaland](#), all of Schenectady’s attractions are accessible by car.



By Bike

The [Mohawk-Hudson Bike-Hike Trail](#) connects Schenectady and Albany Counties, featuring an on-street segment through the heart of Downtown Schenectady. It is part of the statewide Canalway Trail from Albany to Buffalo.



By Bus

The [Capital District Transportation Authority \(CDTA\)](#) provides convenient and affordable transit in New York's Capital Region (Schenectady routes pictured below). Other options include [Adirondack Trailways](#) and [Greyhound Bus Lines](#).

By Train

Schenectady houses an [Amtrak Station](#) that serves the Adirondack, Empire Service, Ethan Allen Express, Lake Shore Limited, and Maple Leaf routes.

Recreation

History

Schenectady NY is deep-rooted in [history](#) and culture dating back to the 1600s.

Museums

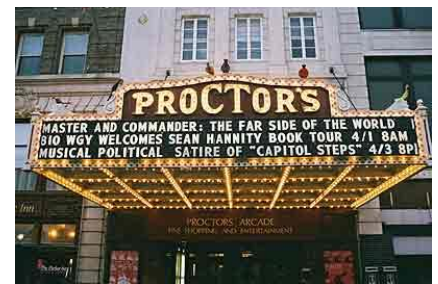
- [The Museum of Innovation and Science](#)
- [University Art Museum](#) in nearby Albany
- [Via Aquarium](#) in nearby Rotterdam houses local and international species in 25,000 feet of water tanks.



Via Aquarium

Listed below are a few of the attractions offered in Schenectady. A more complete listing of attractions in Schenectady can be found [here](#).

- [Museums in Schenectady](#)
- [Family Attractions in Schenectady](#)
- [Nightlife in Schenectady](#)
- [Arts & Culture in Schenectady](#)
- [Dining in Schenectady](#)



Courtesy of Albany

Schools

Generally, to register your child for school you will need to have a passport and/or birth certificate, proof of immunizations, any applicable past school records and proof of residency. Most public schools have boundary areas, and you must show proof (i.e. copy of lease or home purchase agreement) to be allowed to register in that particular school. Please always confirm requirements with the school you are interested in before assuming that your child will be able to attend that school.

Grade level in the public school system is determined by the age of the child. Typically, the child must be 5 years old by September 1st to enter kindergarten. School districts may be very strict about the age requirement, but inquire with the school district you are interested in to determine if there are any exemptions for foreign students who are ahead in grade level. You may also want to ask about any gifted or advanced programs as well as their English as a Second Language (ESL) Programs. Some elementary schools also offer a pre-Kindergarten program for children who miss the September 1st requirement. You may inquire at the school districts for availability.

Contact your IOR Destination Services Consultant for more assistance with schooling questions.

Public, Private, and Preschools

A complete listing of public schools in Schenectady can be viewed [here](#).

A complete listing of private schools in the Schenectady area can be viewed [here](#).

A directory of preschools in the Schenectady area can be viewed [here](#).

Additional Resources

- www.greatschools.org
- www.eschoolprofile.com
- www.schooltree.org

Colleges/Universities

- [Colleges and universities near Schenectady](#)



Courtesy of [Smart College](#)

Obtaining a Driver's License

In the US, a driver's license or ID card is issued by each individual state and not by the federal government. Since there is no national identity card in the USA, and many Americans don't have a passport or carry around a birth certificate, a driver's license issued by your state is often the only official piece of identification for many citizens. Since 9/11, you will need to show a valid driver's license or State ID card to enter many big office buildings.

If you have an out-of-state or out-of-country license, you may use it for as long as you maintain your residency in the state where it was issued. If you are moving permanently to New York, you may use your out-of-state license for only your first month here. To change to a New York license, bring your Social Security card, another form of ID, and multiple utility or phone bills verifying that you are a New York resident to a motor vehicle facility. You'll have to pass written and eye exams, and usually a road test.

For general information and instructions on how to obtain an official state ID card or driver's license, visit the [New York Department of Motor Vehicles](#).

Your Destination Services Consultant will also assist you with the proper procedure.